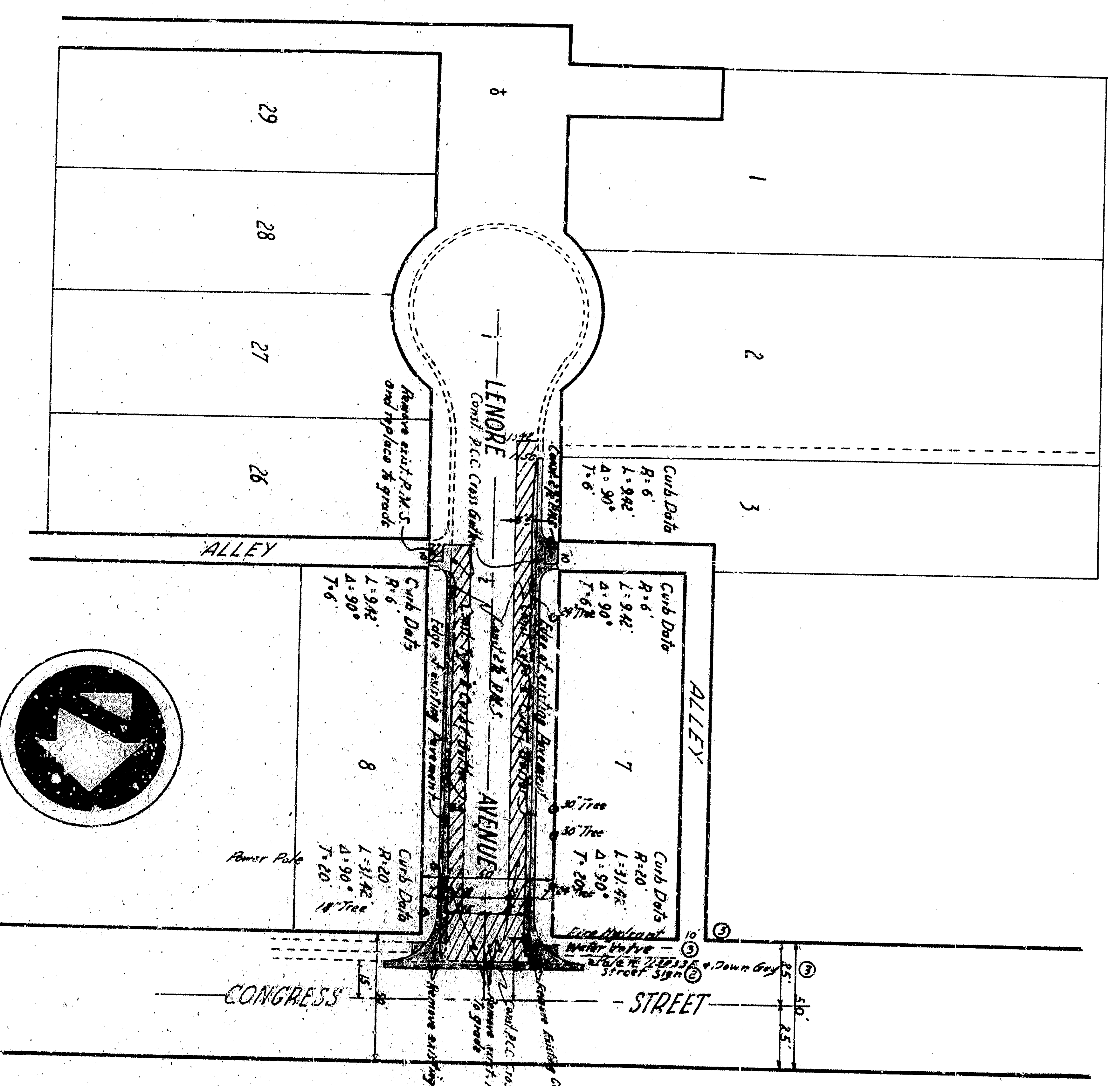
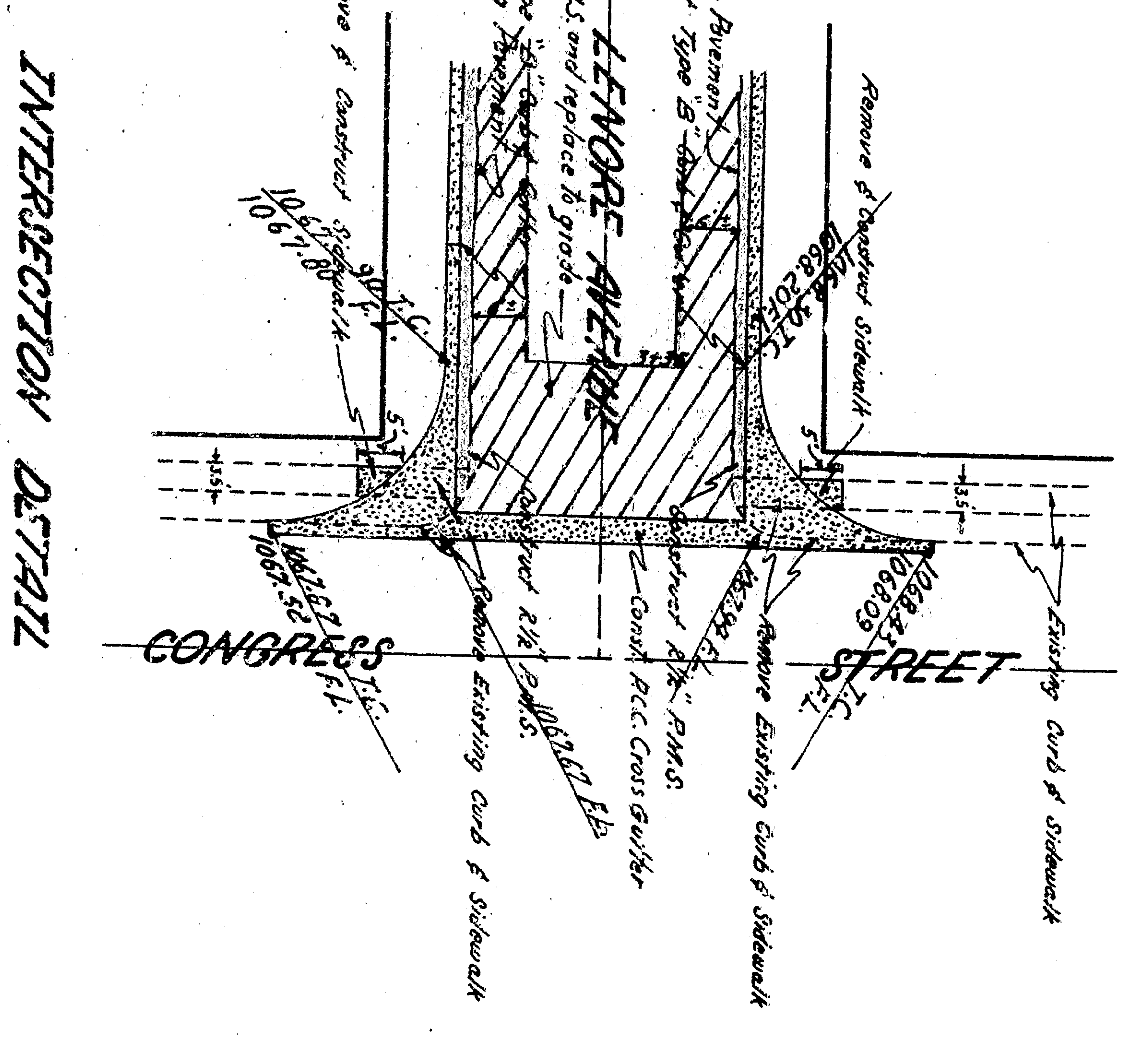
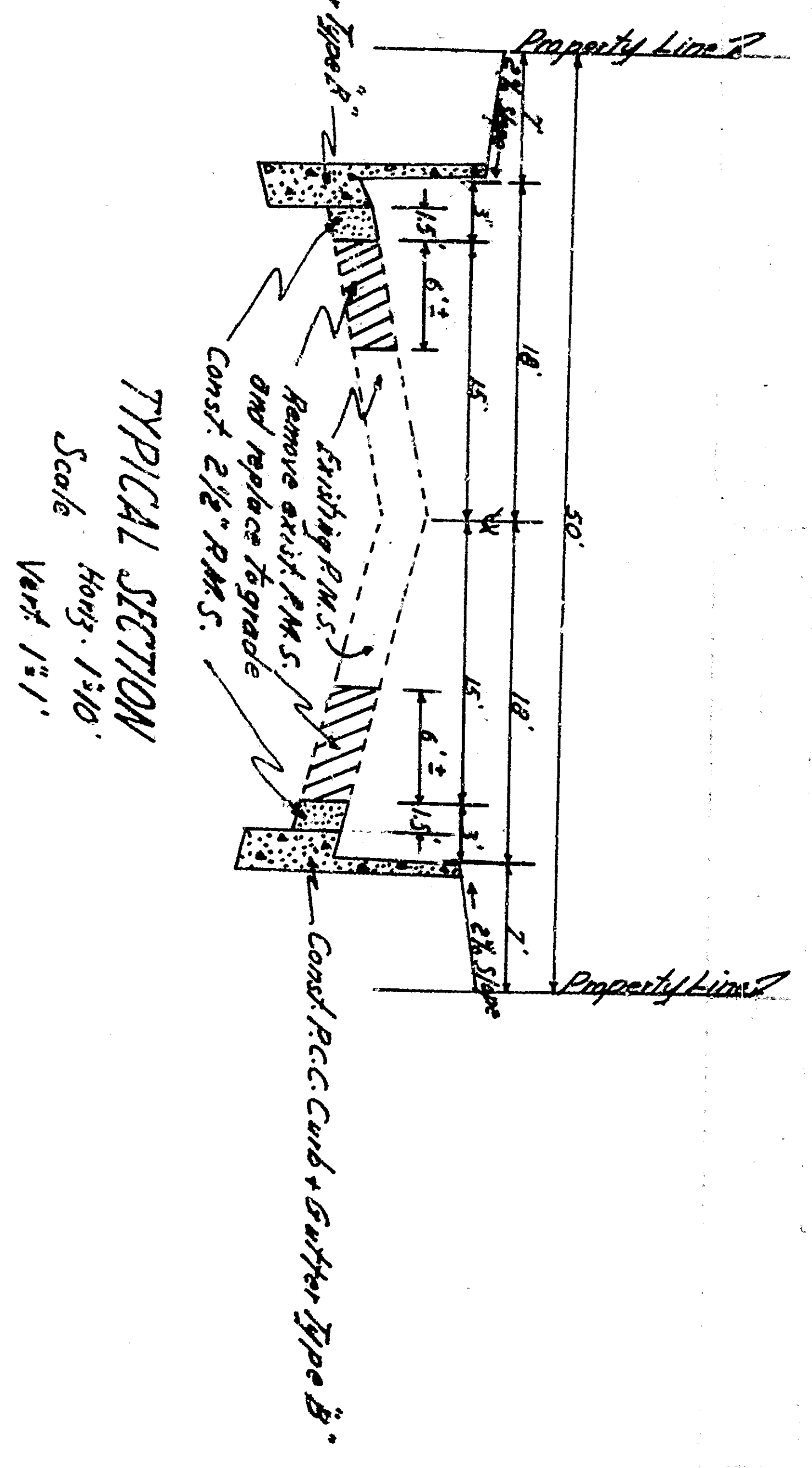
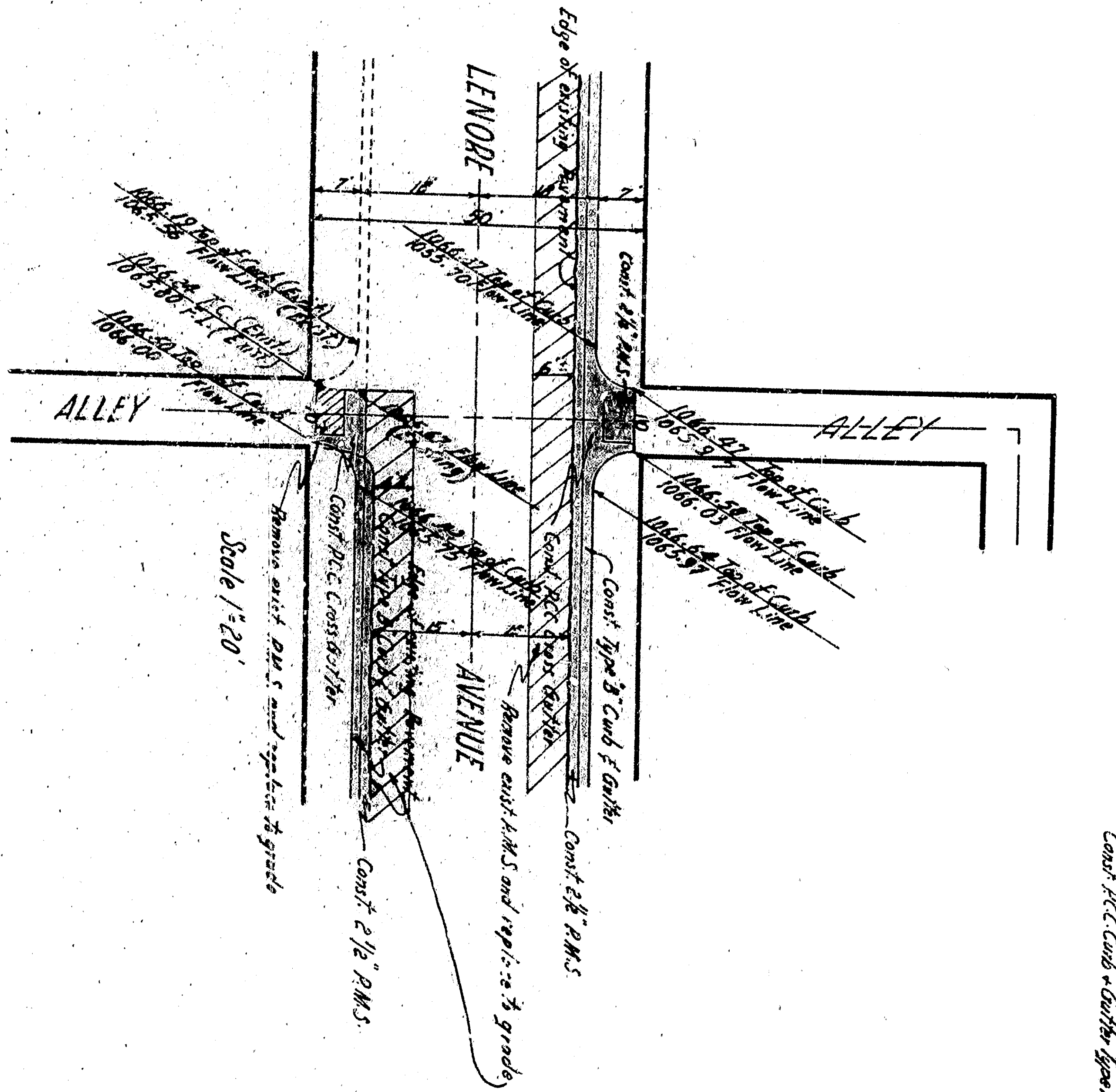


PROFILE
 Horizontal
 Scale: 1/4" = 1'-0"

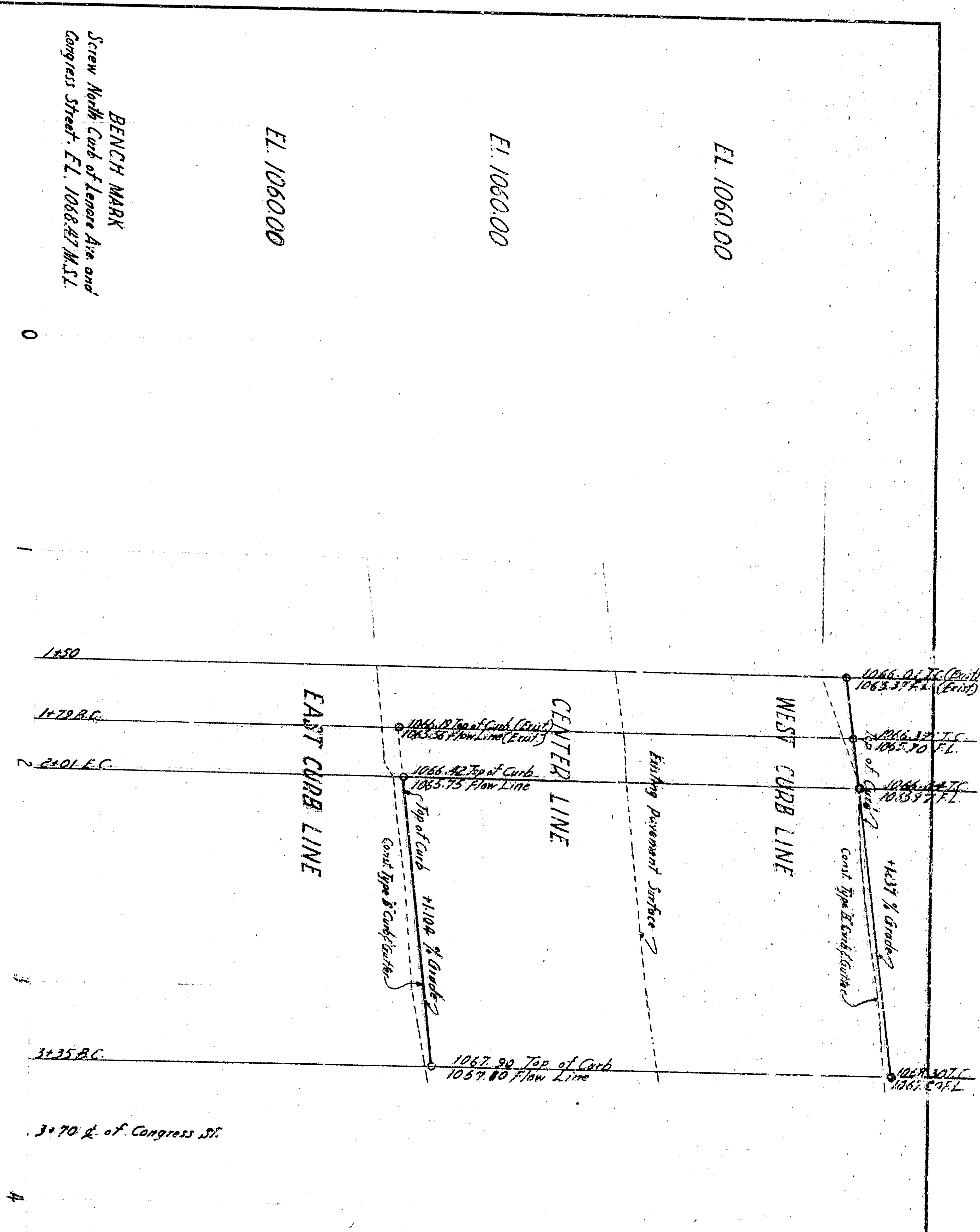


Scale: 1/4" = 1'-0"

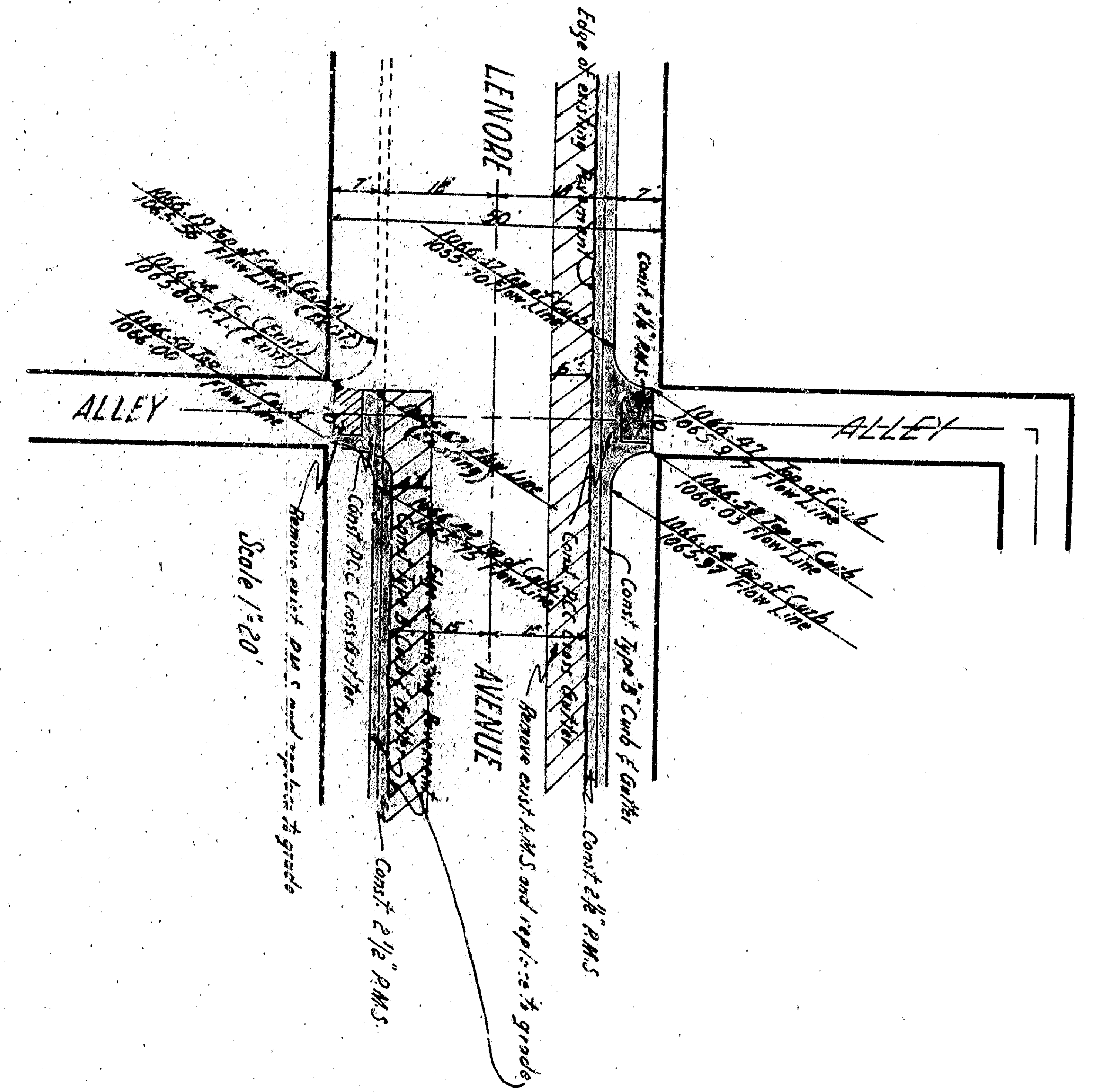
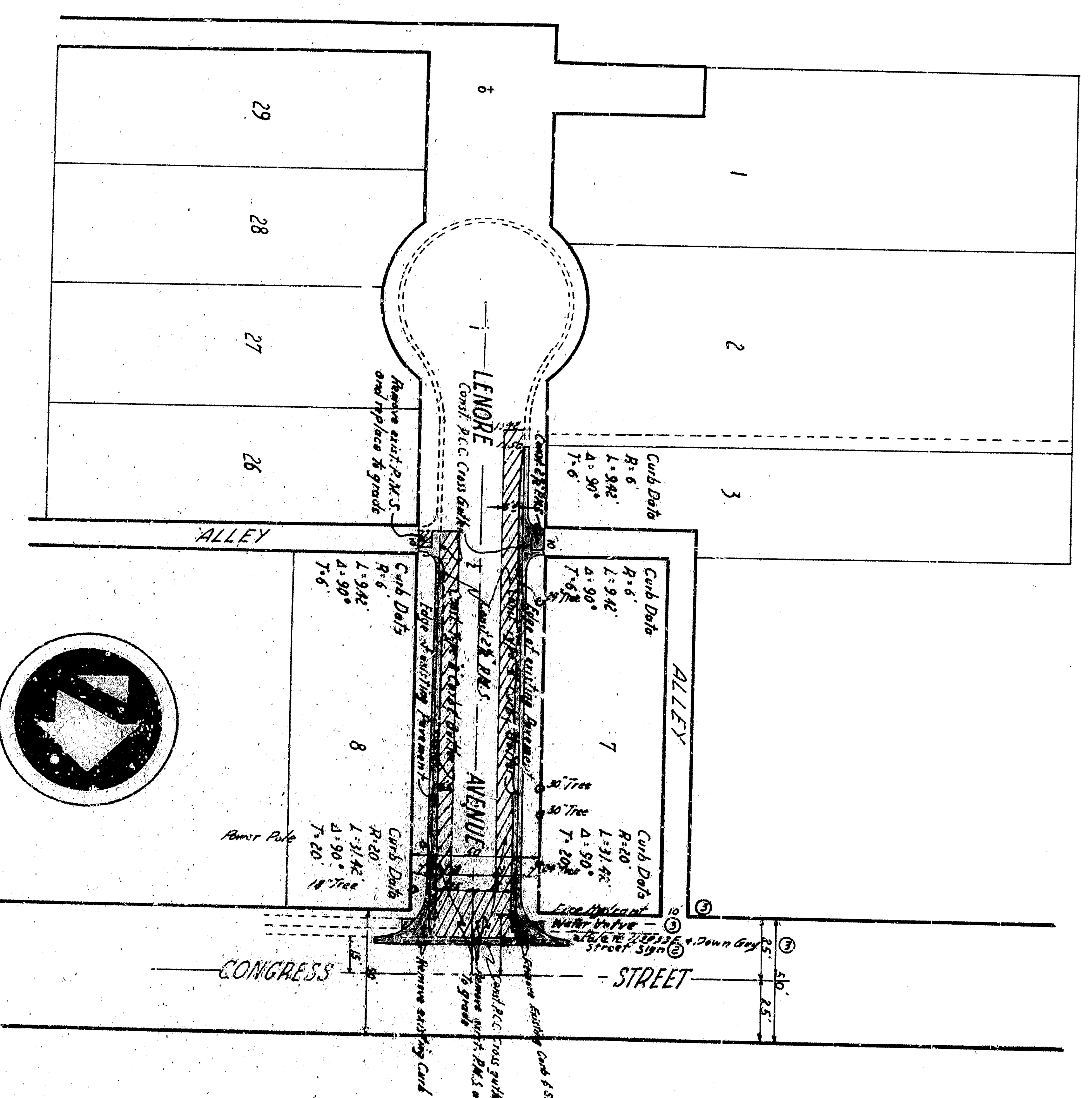


APPROVED	2/11/27	1962
REGISTERED CIVIL ENGINEER	NO. 28852	
DRAWING NO.	2873	
CHECKED BY	STEVEN	
SHEET 2 OF 2 SHEETS		

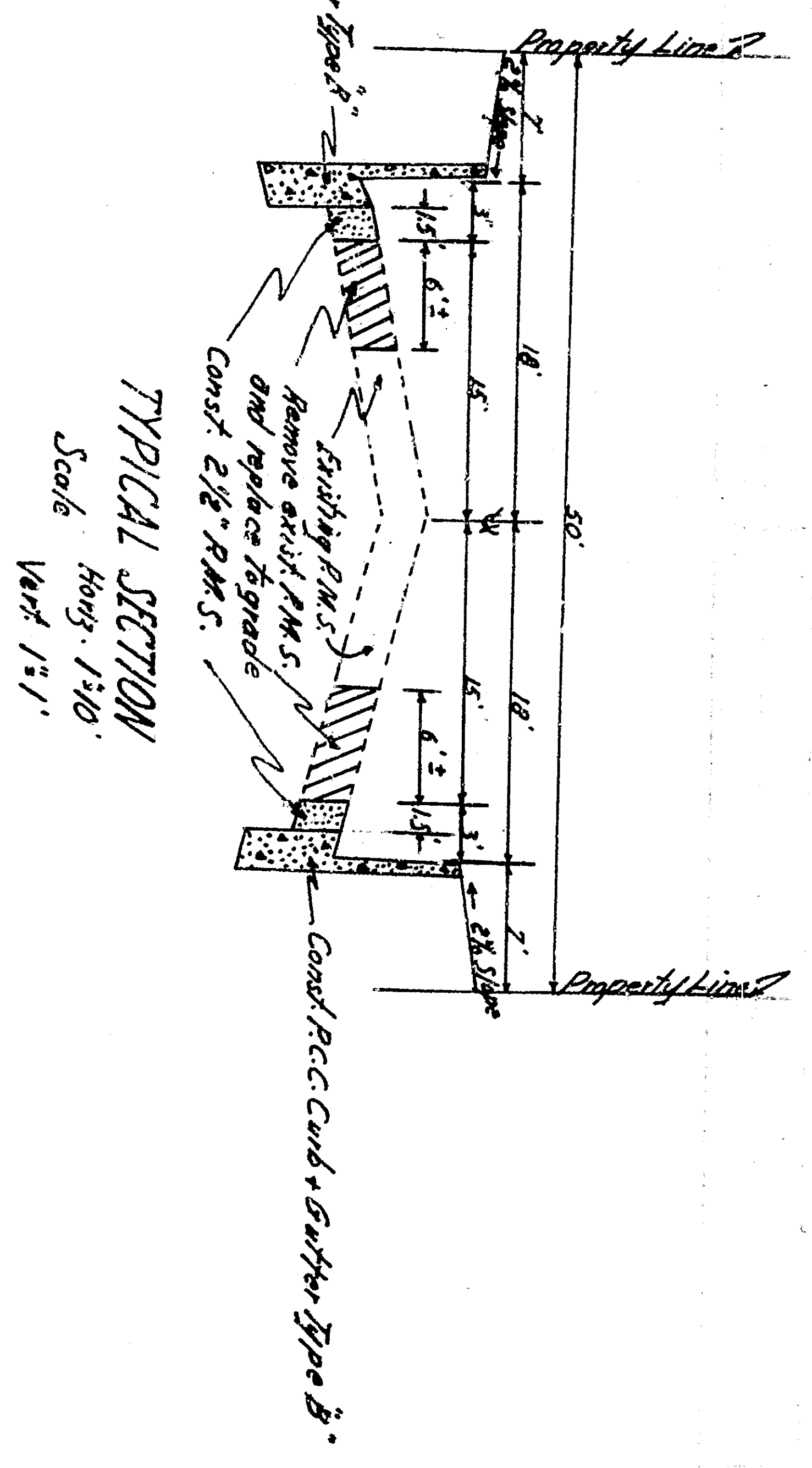
DEPARTMENT OF ENGINEERING
 CITY OF SAN BERNARDINO
 LENORE AVENUE
 Between Congress Street and a point 250 ft. South
 Curb, Gutter & Sidewalk



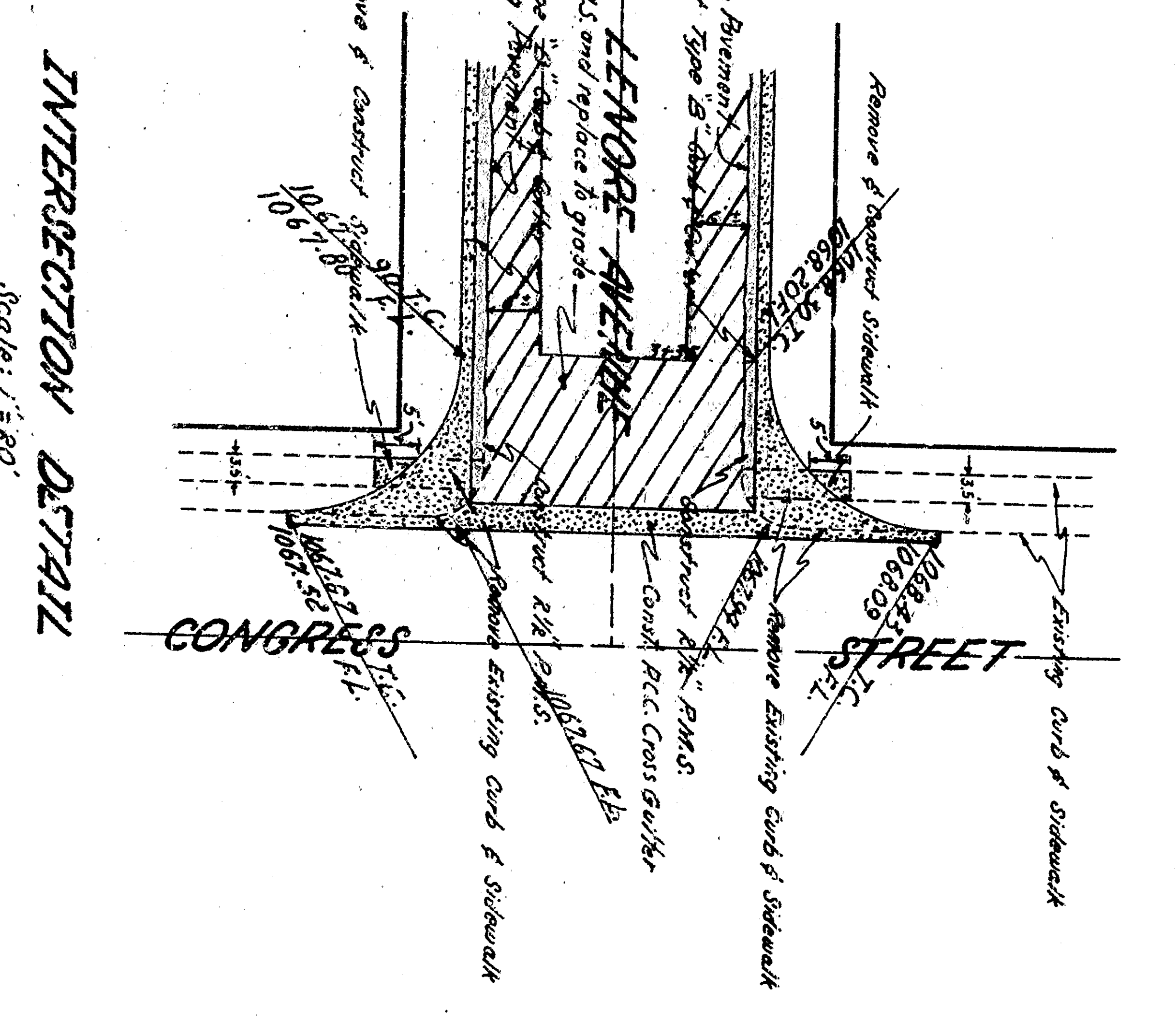
PROFILE
 Horizontal Scale: 1" = 50'
 Vertical Scale: 1" = 5'



INTERSECTION DETAIL
 Scale: 1" = 20'

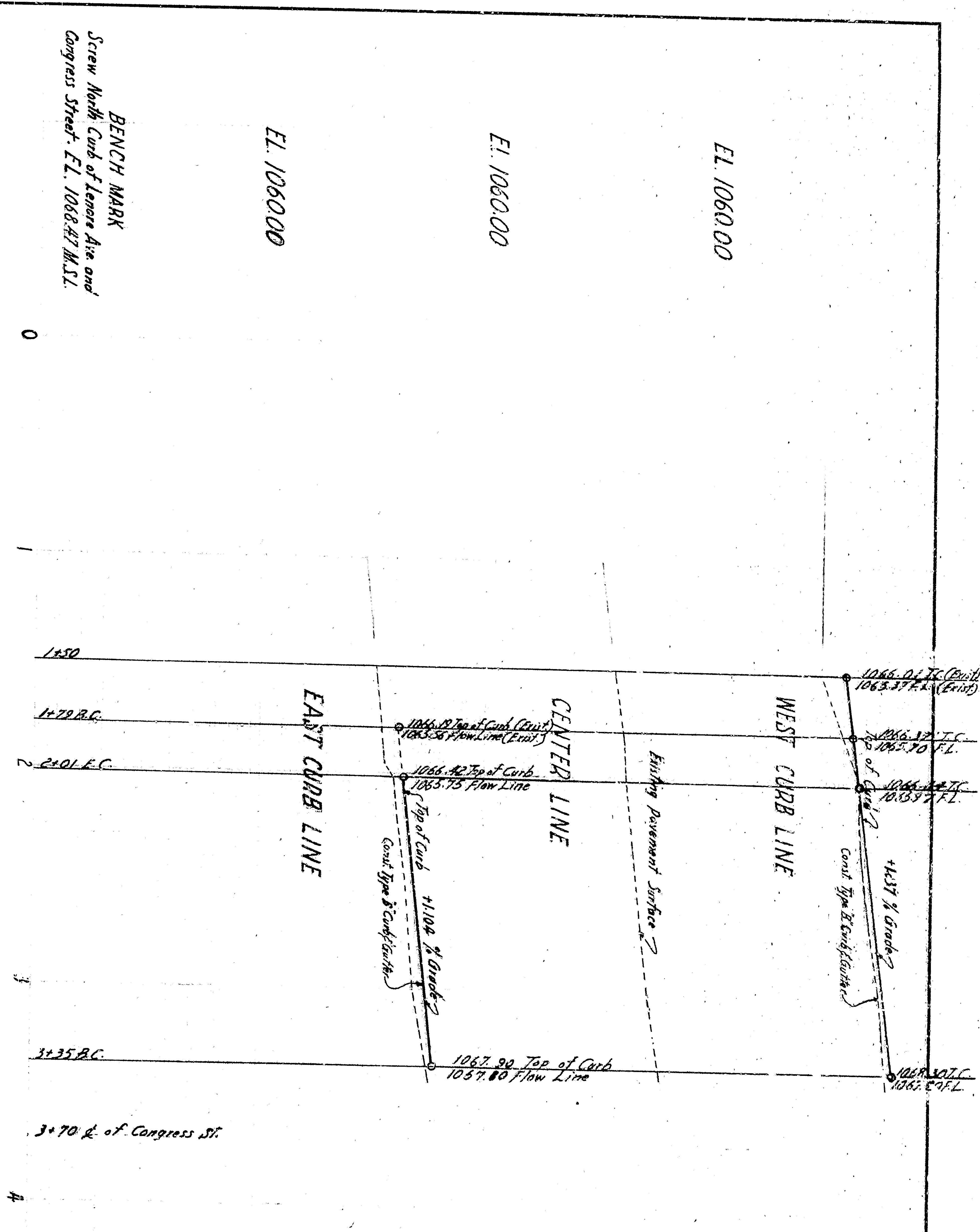


TYPICAL SECTION
 Scale: 1" = 1'

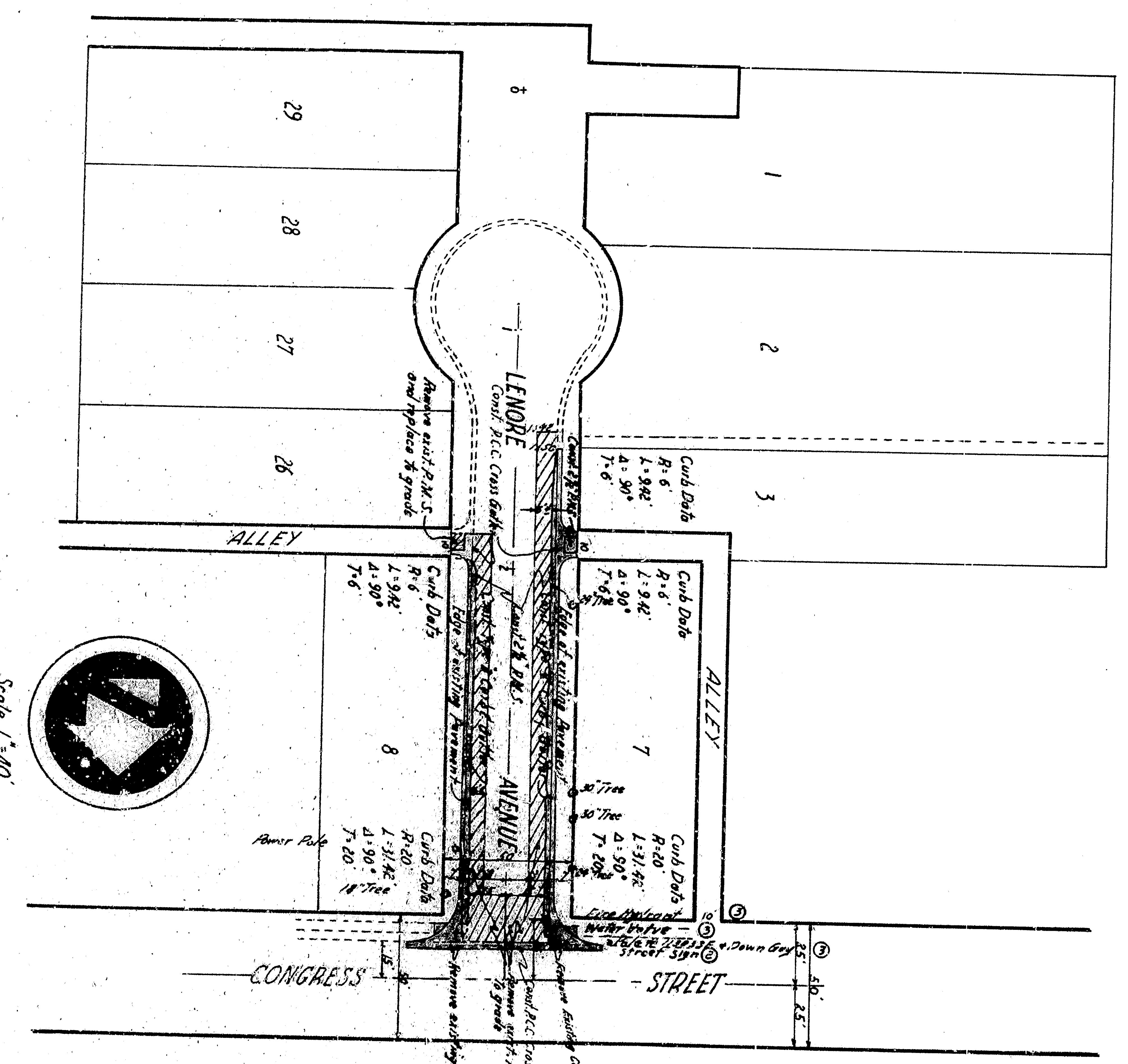


INTERSECTION DETAIL
 Scale: 1" = 20'

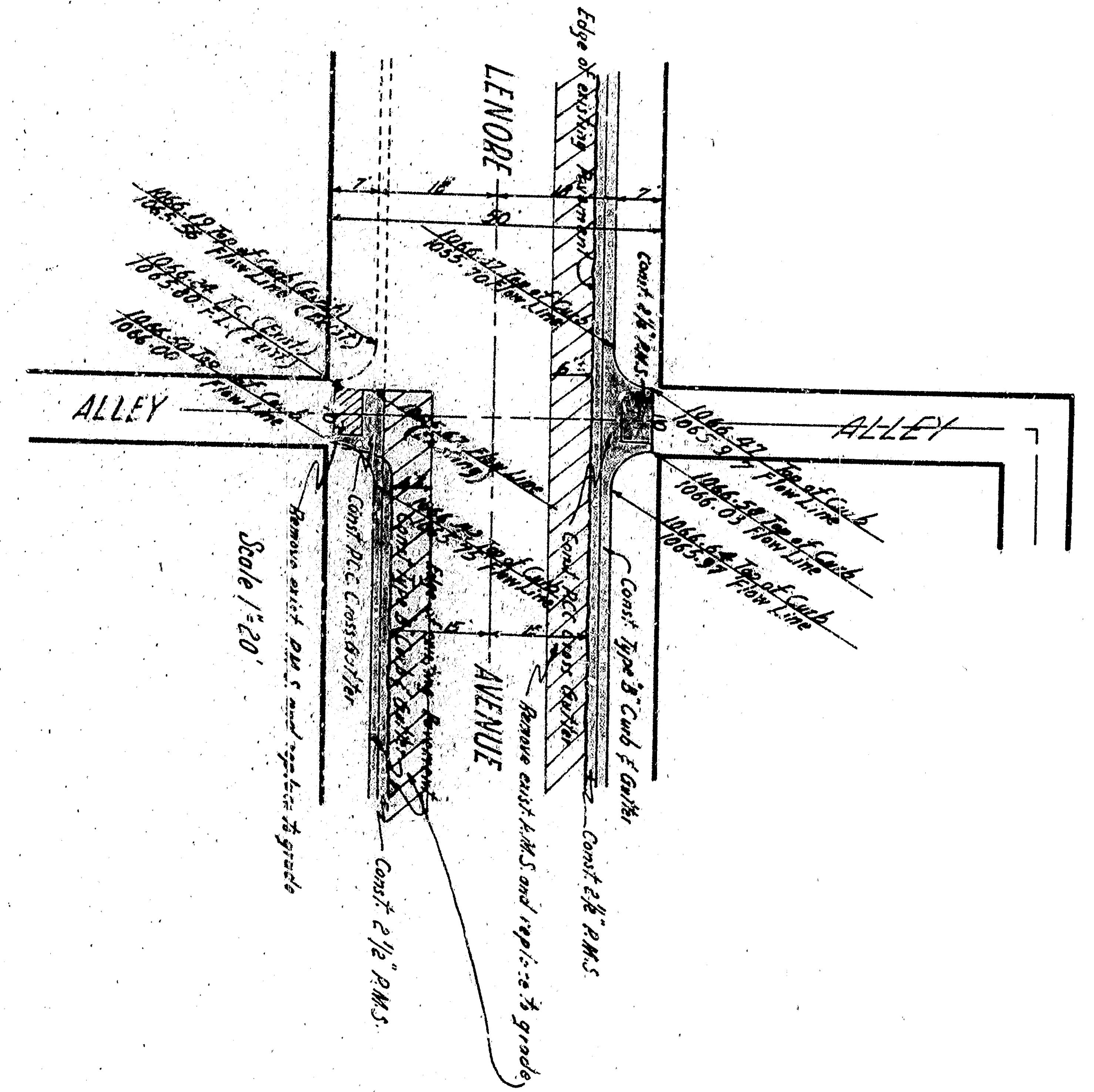
APPROVED	2/11/27	1962	DEPARTMENT OF ENGINEERING CITY OF SAN BERNARDINO
REGISTERED CIVIL ENGINEER NO. 28852			
DRAWING NO. 2873	DRAWN BY: M/L		LENOIRE AVENUE Between Congress Street and a point 250 ft. South Curb, gutter, drainage
SHEET 2 OF 2 SHEETS	CHECKED BY: STEVEN		



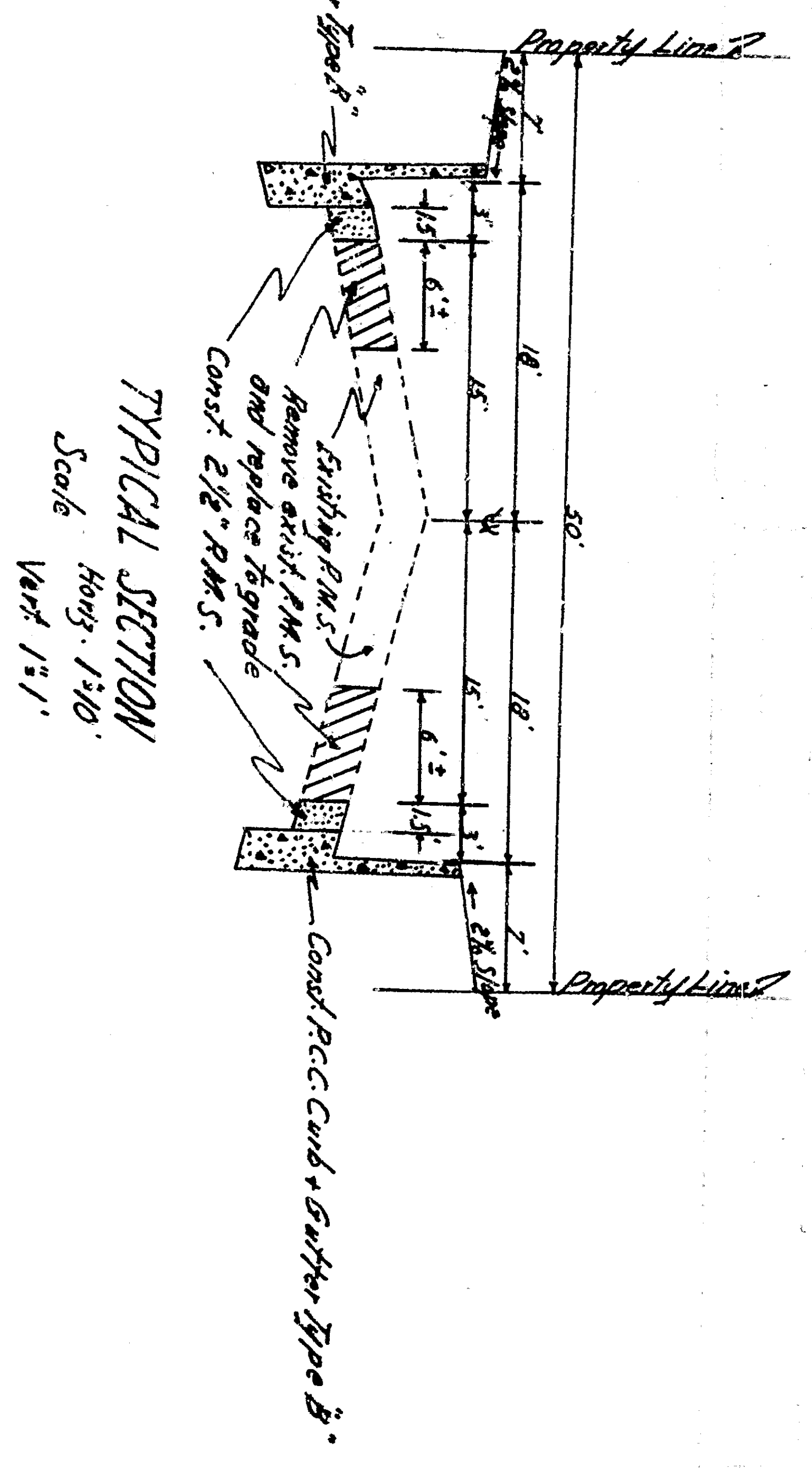
PROFILE
 Horizontal Scale: 1" = 10'
 Vertical Scale: 1" = 4'



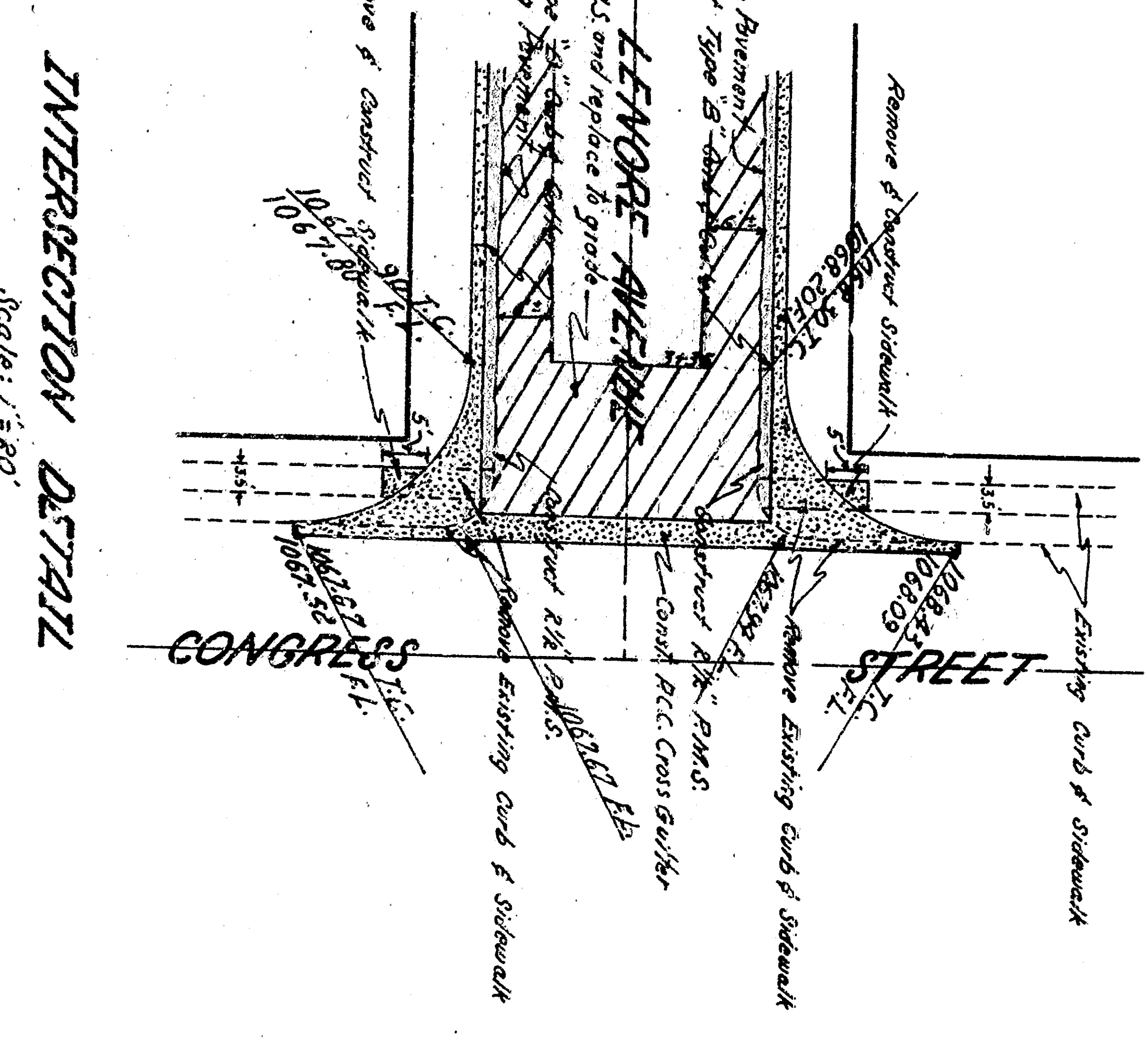
Scale: 1" = 40'



INTERSECTION DETAIL
 Scale: 1/2"



TYPICAL SECTION
 Scale: Vert 1/2"



INTERSECTION DETAIL
 Scale: 1/2"

APPROVED	2/11/62	1962
REGISTERED CIVIL ENGINEER	NO. 28852	
DRAWING NO.	2873	
CHECKED BY	STEVEN	
SHEET 2 OF 2 SHEETS		

DEPARTMENT OF ENGINEERING
 CITY OF SAN BERNARDINO
 LENOIRE AVENUE
 Between Congress Street and a point 250 ft. South
 Civil, Gilbert & Company